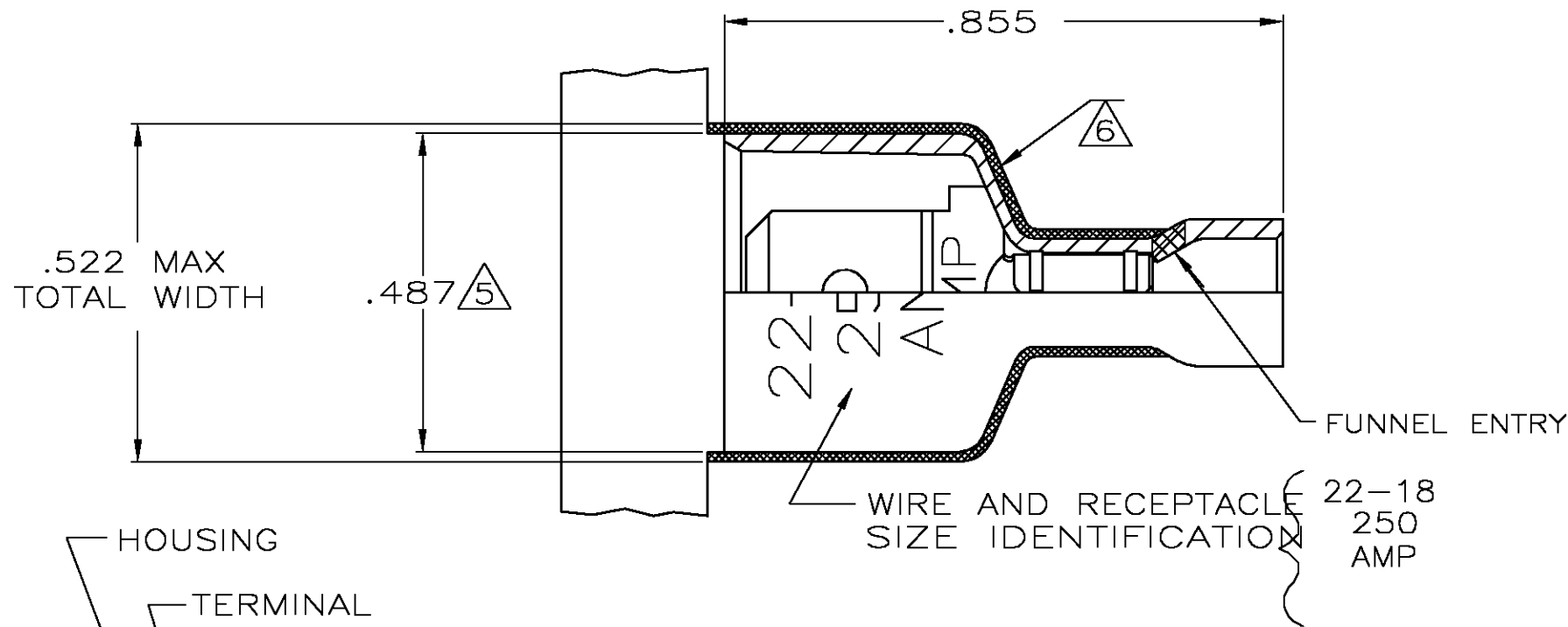
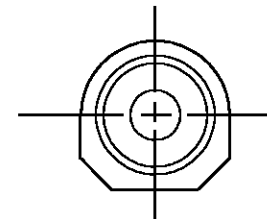
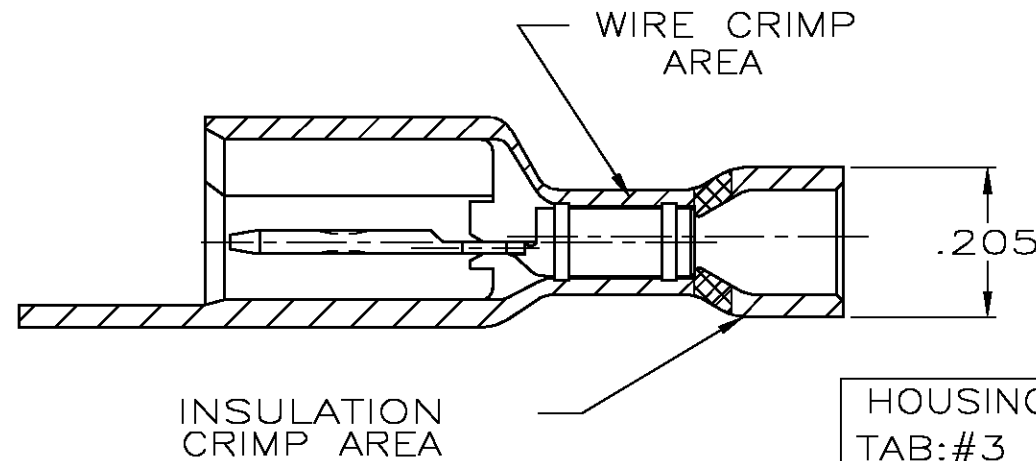
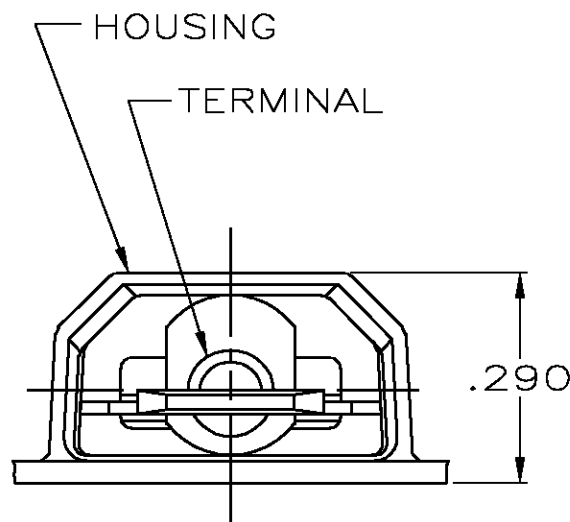


THIS DRAWING IS UNPUBLISHED. RELEASED FOR PUBLICATION .19  
 © COPYRIGHT 19 BY AMP INCORPORATED. ALL INTERNATIONAL RIGHTS RESERVED.

|     |      |   |   |           |     |                      |         |       |
|-----|------|---|---|-----------|-----|----------------------|---------|-------|
| LOC | DIST | P | F | REVISIONS |     |                      |         |       |
| AF  | 50   |   |   | ZONE      | LTR | DESCRIPTION          | DATE    | APPD  |
|     |      |   |   |           | F   | REV PER 0G3A-0392-03 | 27JUN03 | JR/JH |



- 1 TAB DIMENSIONS .032±.001x.250
- 2 WIRE STRIP LENGTH .281
- 3 INSULATION SIZE .060-.135 DIA
- 4 CONTINUOUS STRIP ON REELS
- △5 DIMENSION DOES NOT INCLUDE TRIM BURR
- △6 .015 MAX CARRIER TRIM BURR PER SIDE IS ALLOWABLE IN THE SHADED AREA



|  |            |
|--|------------|
| HOUSING: NYLON, COLOR-RED TRANSLUCENT<br>TAB: #3 HARD BRASS, TIN .000080 MIN | 2-521055-2 |
| HOUSING: NYLON, COLOR-RED TRANSLUCENT<br>TAB: #3 HARD BRASS, UNPLATED        | 2-521055-1 |
| MATERIAL & FINISH  | PART NO    |

|   |                                 |   |
|---|---------------------------------|---|
| DO NOT SCALE PRINT. UNLESS SPECIFIED DIMENSIONS IN INCHES TOLERANCES ON:<br>2 PLC DEC ± -<br>3 PLC DEC ± .015<br>ANGLES ± - | DR 3/14/94<br>JR RUTH           | AMP INCORPORATED<br>Harrisburg, Pa. 17105                         |
|   | CHK 3/14/94<br>MS FEHER         |   |
| MATERIAL<br>SEE TABLE   | APPD 3/14/94<br>D BRATINA       | NAME<br>TAB ASSEMBLY, ULTRA-FAST,<br>PLUS, .250 SERIES, 22-18 AWG |
|   | APPD 3/14/94<br>V KARABCIJEVSKY | SIZE <b>B</b> FSCM NO 00779 DRAWING NO 521055                     |
| FINISH<br>SEE TABLE   | PRODUCT SPEC 108-2017           | SCALE 4:1 SHEET 1 OF 1  |
|   | APPLICATION SPEC 114-2123       |   |
| WEIGHT -  |                                 |   |